

**B. Architecture Third Year First Semester Examination 2024****Subject: Landscape Architecture I**

Time: Three hours

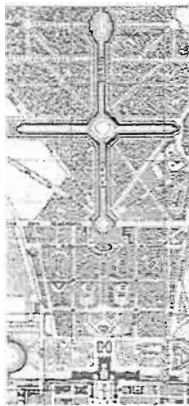
Full marks: 100

**Qs. no. 1 is COMPULSORY. Answer any TWO from the rest.****Blank pages left unnecessarily in the answer script will be discredited. Answers to a question/ or part of it shall not be split across the answer script.**

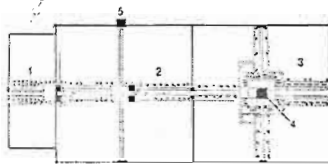
- I A. Fill in the blanks: (1 x 10 = 10)
- The State tree of West Bengal is \_\_\_\_\_.
  - The number of rainy days in a year in Kolkata is considered to be \_\_\_\_\_.
  - Annual RWH potential depends on \_\_\_\_\_ and \_\_\_\_\_.
  - The minimum slope of a pedestrian ramp is \_\_\_\_\_ percentage.
  - The street furniture used for traffic separation is called \_\_\_\_\_.
  - The Central Park was designed by \_\_\_\_\_.
  - The two categories of Mughal gardens are \_\_\_\_\_ and \_\_\_\_\_.
- I B. Write short notes on the following: (2 x 5 = 10)
- Andre Le Notre
  - Lancelot Brown

2. Identify the following gardens from their plans / views given below and describe their salient features, mentioning their time period and location (ANY FOUR): Please note that some plans / views are partial. (4 x 10 = 40)

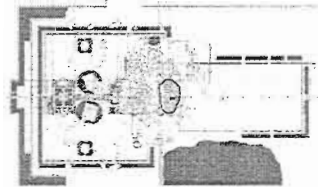
A.



B.



C.



D.



E.



- 3A. Discuss the significance of urban water bodies and wetlands, with a particular thrust on land-water interface. Use sketches generously to explain your answer. 20
- 3B. What is meant by grading? What are its uses? Describe how landform may be used to alter spatial and visual perception. (5+5+10 = 20)
- 4A. Define outdoor furniture. Suggest at least TWO different landscape materials for each: (i) pathway and (ii) driveway in a residential complex. Sketch TWO different patterns with your chosen materials, i.e., two patterns each for the pathway and the driveway. (4+2+2+6+6 = 20)
- 4B. Name the following plants: (1 x 12 = 12)
- |                           |                                      |                                     |
|---------------------------|--------------------------------------|-------------------------------------|
| i. A feather-leaf palm    | v. A spring flowering deciduous tree | ix. A specimen plant                |
| ii. A fan-leaf Palm       | vi. A fragrant flowering shrub       | x. A cluster Palm                   |
| iii. A columnar tree      | vii. A foliage shrub                 | xi. An erect Palm                   |
| iv. India's national tree | viii. Bodhi tree                     | xii. A horizontally spreading tree. |
- 4C. Define "tree" as per the West Bengal Trees (Protection and Conservation in Non-Forest Areas) Act, 2006. Briefly mention the ecological and environmental functions of trees. (2+ 6 = 8)