



Internal Combustion Engines

Lecture-7

Swarnendu Sen

Professor

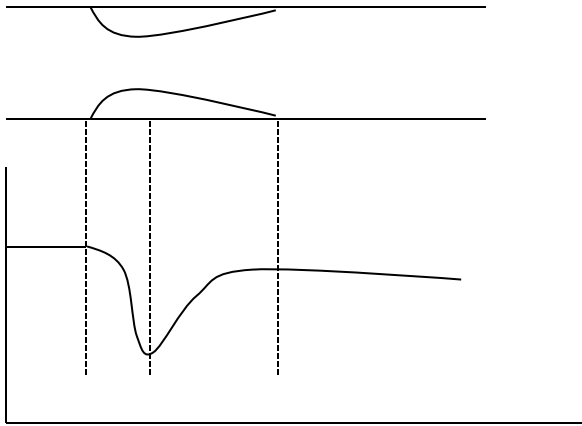
Department of Mechanical Engineering

Jadavpur University

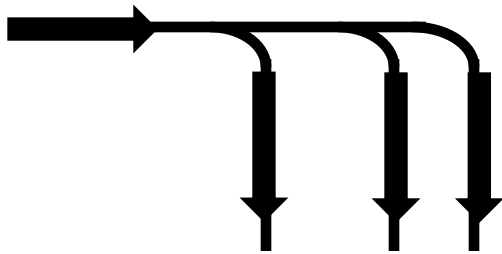
Kolkata – 700032

E-mail: sen.swarnendu@gmail.com

Disadvantages of Carburetor



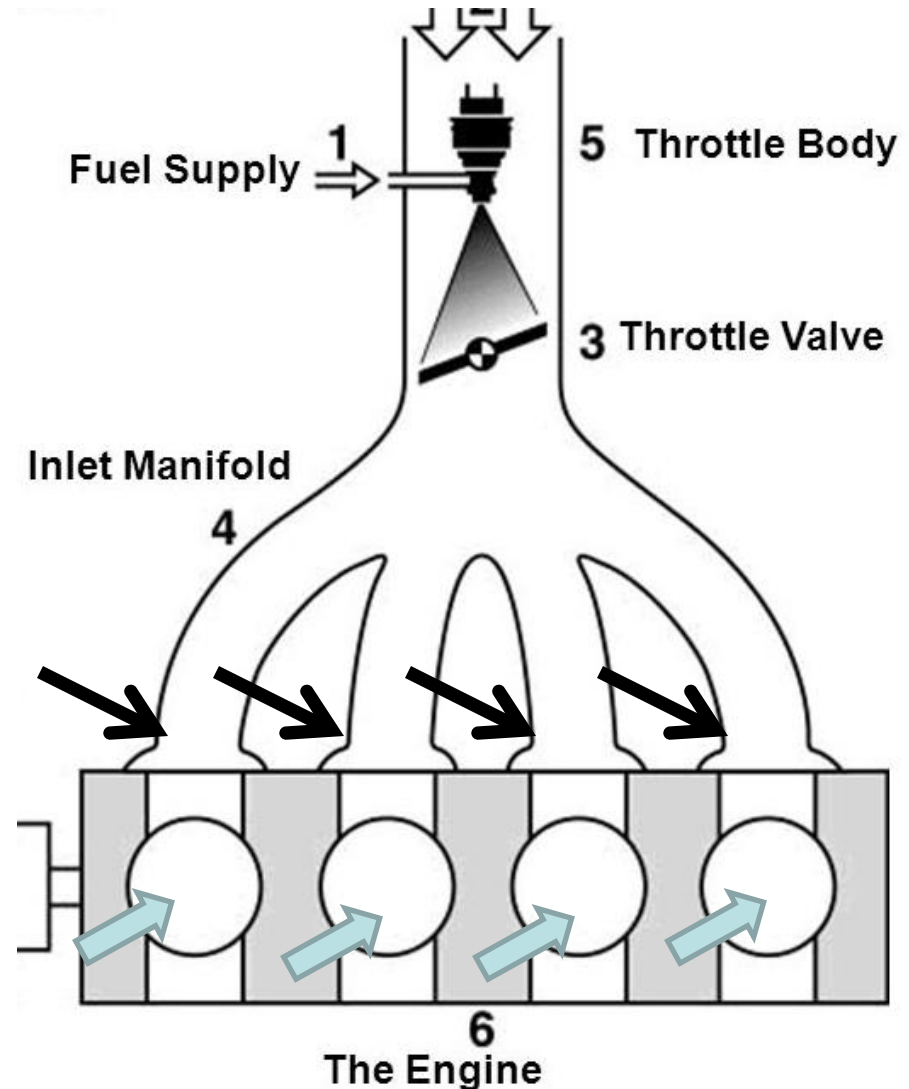
- Pressure recovery is not possible after venturi
- Density decreases and volumetric efficiency reduces



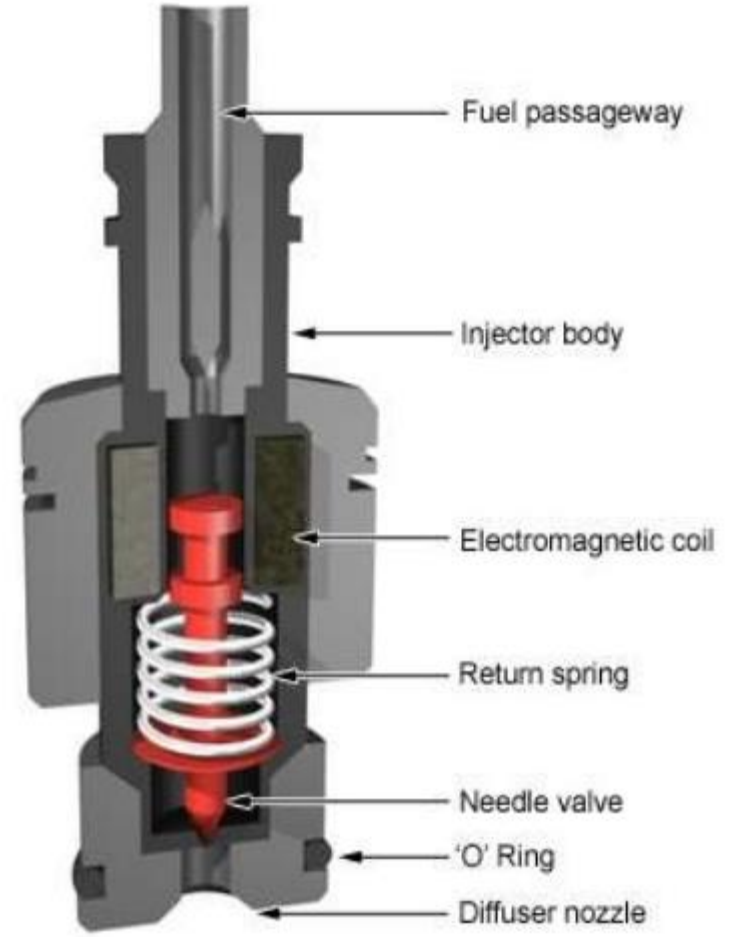
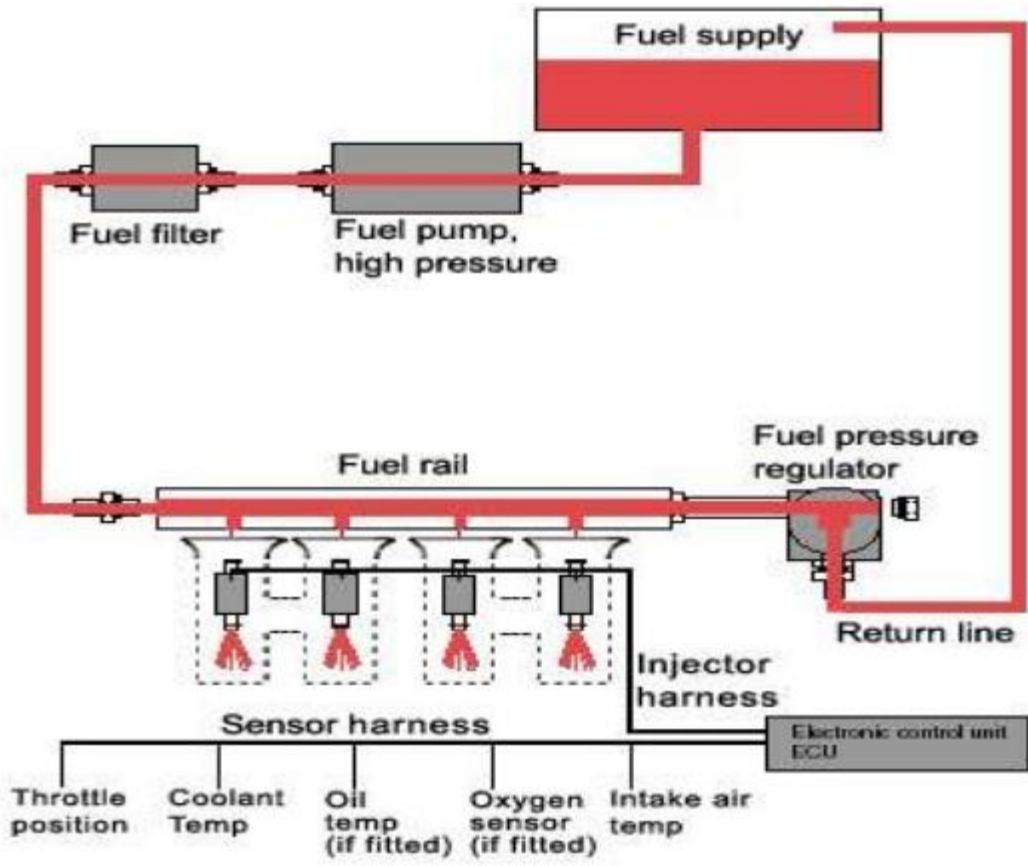
- Hydrocarbon fuel is a mixture of a number of different components of different molecular mass or density
- While bending these components separated at different places
- Different cylinders get different components

Types of Injection Systems

- Throttle Body/Single Point Injection System
- Multi Point Fuel Injection System (MPFI)
- Gasoline Direct Injection System (GDI)



Injection System





Thank You